

AIRSTOP Conduit Sleeve RGD

To enable vapour retarders and other materials to fulfil their purpose as airtight layer in a construction. These must have air-tight joints at openings for conduits. Warm air finds its way inside a building component through even the smallest of holes in the vapour retarder, where it then condenses. AIRSTOP Conduit Sleeves, bonded air-tight with age-resistant sealing plasters, guarantee that the construction is wind-tight and air-tight.

FIELD OF APPLICATION

- openings for conduits

ADVANTAGES

- extremely flexible
- resistant to ageing
- integrated sealing plaster for air-tight adhesion
- rubber heat-resistant up to 160°C (short-term)

AVAILABLE IN THE FOLLOWING DIMENSIONS

Item	RGD 50	RGD 75	RGD 100
For conduit entry	50 - 70 mm	75 - 90 mm	100 - 110 mm
Outer dimension	228 mm	228 mm	320 mm
Carton contents / pieces	4	4	4

PRODUCT DATA

Composition	EPDM rubber, sealing plaster with age-resistant pure acrylate adhesive
Temperature resistance of adhesive	- 40 °C - + 100 °C
Working temperature	- 5 °C - + 40 °C
Age resistance of adhesive	30 years
Storage	cool and dry
Colour	black, sealing plaster white with green imprint

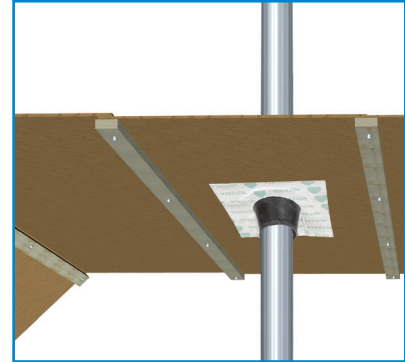
PROCESSING GUIDELINES

AIRSTOP Conduit Sleeve RGD

Pull the rubber sleeve over the conduit and attach to the air-tight layer (vapour barrier, OSB, ...) by the integrated sealing plaster. The diameter of the sleeve selected must have the appropriate dimension for the conduit entry point!

The materials used must be free from dust and grease and substrates must be dry and supporting. The greater the pressure applied, the better the performance of the sealing plaster!

On highly porous and very absorbent substrates such as concrete, plaster, untreated steel or raw wood, we recommend pre-treatment of the substrate with our ISOCELL primers.



ISOCELL GmbH
Gewerbestraße 9
5202 NEUMARKT AM WALLERSEE | Österreich
Tel.: +43 6216 4108 | Fax: +43 6216 7979
office@isocell.at

ISOCELL SCHWEIZ AG
Herbergstrasse 29
9524 ZUZWIL | Suisse /Schweiz
Tel.: +41 71 544 47 20
office@isocell.ch

ISOCELL FRANCE
170 Rue Jean Monnet | ZAC de Prat Pip Sud
29490 GUIPAVAS | France
Tel.: +33 2 98 42 11 00 | Fax: +33 2 98 42 11 99
contact@isocell-france.fr

ISOCELL BUREEL BELGIË
Außenborner Weg 1 | Schoppen
4770 AMEL | Belgique
Tel.: +32 80 39 90 58 | Fax: +32 80 39 97 68
office@isocell.be

ISOCELL Sverige AB
Gamla Stallet | Stora Väsby
194 37 UPPLANDS VÄSBY | Sverige
Tel.: +46 10 130 25 01
office@isocell.se

www.isocell.com